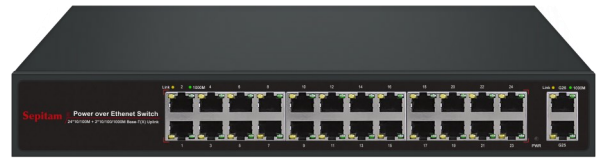




POWER OVER ETHERNET PORTS

TYPE: Sepitam-PS224E-DG



Description:

This equipment can prepare a field that power and data can feed from a single point, using Power over Ethernet (PoE) over a single cable. One 24 Fast Ethernet ports prepared any 10/100 Mbps link and all ports can supply industry-standard IEEE 802.3af power for every POE standard devices.

Regards to using advanced auto-sensing algorithm the **Sepitam-PS224E-DG** gives power only to IEEE 802.3af front-end standard devices, so don't worry about connecting PoE or non-PoE devices to this feeder. Additionally, this good gives up the power when PoE devices are disconnected. Intelligently, this PoE Switch can recognized automatically PoE demands of devices, speed, duplex, and cable type using Auto Uplink™.

Here available 2 mode of management system and un management that you must select when order.

Product features:

All 24 ports support IEEE802.3af independently

Supports power to wireless A.P and IP cameras over Cat-5 cabling

All 24 ports support 10/100 Mbps speed with Auto Uplink™

Each PoE port can prepare more than 15.4Watt

Totally it can prepare about 375 watt on output ports

All compliant power devices under IEEE802.3af standards can feeded

Full duplex mode and back pressure for half duplex mode under IEEE 802.3x flow control standard supported

MAC address table of the PoE Switch **Sepitam-PS224E-DG** with auto-learning and auto-aging is 8K

Special panel indicator with LEDs in order to monitoring power, available link, activity and speed

Available reset pin to manage better

Network management system available to manage and setup the ports



APPLICATION AND INDUSTRIES:

IP cameras monitoring systems and transmitting systems
Access points wireless systems and transmission data
IP telephony , virtual PABX and intelligent unmanned systems
Management and support Intelligent transportation supervisory (ITS)
Monitoring TV medical and management
School , campus, and... monitoring and remote control
Telecom and network devices feeder

General Information:

Product Type: Sepitam-PS224E-DG

Ports: 24-PORT 10/100 SWITCH WITH 24-PORT POE

PoE Power Output per port: 15.4Watts (Guarantee per port)

PoE Budget: 400Watts

Power Pin Assignment: optionally selected by customer (mid span / end span)

Connectors: 24X 10/100Mbps RJ45 Ports, 2 Gigabit Combo ports

Base media: 100Base-TX (≤ 150 meters), 1000Base-FX, 1000Base-TX

Architecture: Store-And-Forward Architecture

Standards: IEEE 802.3i; IEEE 802.3u; IEEE 802.3x Flow Control; IEEE 802.1af DTE Power via MDI

POE standard: IEEE802.3af

Management : management based on WEB

VLAN : supported IEEE 802.1Q VLAN (up to 128)

Network protocols: SNMP, IEEE 802.1Q , IEEE 802.1p , 802.3ad , 802.1D, Port Mirroring Setting, upload and download of config file

Dimension: (L x W x H) 330 x 205 x 44.5mm , 2300g

Operating and Environment: temperature: 0 to 55°C Storage temperature: -20 to 75°C, Operating Humidity 10%~90%(Non-Condense)



Technical Specification of

Sepitam-PS224E-DG

شرکت سپیتام



www.Sepitam.com